

Product Guide



Welcome

This guide has been produced to give an overall view of the product range at Wildflower Turf Limited.

As you will see the company has a wide range of products that have been developed over a number of years to deliver reliable results in a range of different environments.

Wildflower Turf Limited are recognised as the UK's pioneering and leading supplier of Wildflower Turf® and related products. The company has its own Research and Development facility and

is constantly striving to improve and widen its product offering.

With the knowledge gained over the many years, we have grown numerous bespoke wild flower mixes for a wide range of customers, including several bespoke mixes for the 2012 Olympics.

We would welcome any enquiry you have and look forward to working with you to produce biodiverse and stunning landscapes.



Contents

Wildflower Turf® Products	5
Wildflower Landscape Turf	6
Wildflower Native Enriched Turf	8
Wildflower Shade Tolerant Turf	10
Wildflower Roof Turf	12
Wildflower Roof Substrate	14
Wildflower Turf Bespoke	15
Species Rich Lawn Turf	16
Wildflower SuDS Turf	18
Turf Information	20
Measurements	20
Turf Top Tips	21
Step by Step Guide – Turf Installation	22
Enhance your Meadow Products	25
Wildflower Turf Finisher	26
Step by Step Guide – Turf Finisher	27
Spring Scatter Bulb Mixes	28
Naturalising Scatter Mix	29
Vibrant Spring Scatter Mix	30
Bees and Butterflies	
Summer Scatter Mix	31
Pastel Spring Mix	32
Bulb Top Tips	33

Accredited Partners to install and maintain	35
Meadowscape Pro™ Products	37
About Meadowscape Pro™	38
Meadowscape Pro™ Landscape	39
Meadowscape Pro™ Shade Tolerant	40
Meadowscape Pro™ Native Enriched	41
Meadowscape Pro™ Annuals	43
Meadowscape Pro™ Species Rich Lawn	44
Meadowscape Pro™ Bespoke	45
Meadowscape Pro™ Information	46
Step by Step Guide – Meadowscape Pro™ Installation	46
Meadowscape Pro™ Top Tips	47

Key used in this guide:

* All dimensions are approximate.

† For saturated / mature turf reduce pallet volume by 20m²

†† Heights subject to seasonal variations.

Plant development variation will occur depending on specific site conditions. There may also be differences between turf batches depending on seed mixes used and the maturity of the turf taken.

Please call 01256 771222 for updates.





Wildflower Turf® Products

The guaranteed, risk free approach to
establishing a wild flower meadow.

Wildflower Landscape Turf

Key product points:

- ▶ A UK native Wildflower Turf® suitable for a range of soil types.
- ▶ It has a very natural 'hay meadow' look and feel.
- ▶ All ground landscaping applications from 20m² to 10,000m².
- ▶ Shade and drought tolerant.
- ▶ Low Maintenance – one to two cuts a year.

Stock item.

About the Product:

This is a core product Wildflower Turf® has developed using its unique 'soil-less' system that is weed suppressing, easy to

handle and delivers a guaranteed wild flower environment. The turf is made up of over 30 UK native wild flowers and non invasive grasses, with a minimum of 75% wild flowers.

Typical Applications:

Gardens, parks, municipal areas, private grounds and estates, education/outdoor classrooms.

Specification:

Min / Max Established Height

- ▶ Min: 30cm
- ▶ Max: 75cm

To specify product

Product Code: **WFT-Landscape-34**

Detailed specification documents for product types, installation and maintenance requirements are available on request.



Species *(Seed mixes may vary subject to availability)*

Key: *P = Perennial; A = Annual; BI = Biennial; SLP = Short lived perennial*

Grasses:			
Crested Dogstail (Cynosurus cristatus)	Sheep's Fescue (Festuca ovina)		
Flora:			
Autumn Hawkbit (Scorzoneroides autumnalis) (P)	Betony (Stachys officinalis) (P)	Birds-foot Trefoil (Lotus corniculatus) (P)	Bladder Champion (Silene vulgaris) (P)
Cats Ear (Hypochoeris radicata) (P)	Common Knapweed (Centaurea nigra) (P)	Common Sorrel (Rumex acetosa) (P)	Common Toadflax (Linaria vulgaris) (P)
Common Vetch (Vicia sativa ssp. segetalis) (A)	Cowslip (Primula veris) (P)	Field Scabious (Knautia arvensis) (P)	Kidney Vetch (Anthyllis vulneraria) (P)
Lady's Bedstraw (Galium verum) (P)	Meadow Buttercup (Ranunculus acris) (P)	Meadow Cranesbill (Geranium pratense) (P)	Meadowsweet (Filipendula ulmaria) (P)
Musk Mallow (Malva moschata) (P)	Ox Eye Daisy (Leucanthemum vulgare) (P)	Perforate St Johns Wort (Hypericum perforatum) (P)	Ragged Robin (Lychnis flos-cuculi) (P)
Red Campion (Silene dioica) (P)	Ribwort Plantain (Plantago lanceolata) (P)	Rough Hawkbit (Leontodon hispidus) (P)	Salad Burnet (Sanguisorba minor) (P)
Self-heal (Prunella vulgaris) (P)	Tufted Vetch (Vicia cracca) (P)	White Campion (Silene latifolia) (P)	Wild Carrot (Daucus carota) (BI)
Wild Marjoram (Origanum vulgare) (P)	Wild Red Clover (Trifolium pratense) (P)	Yarrow (Achillea millefolium) (P)	Yellow Rattle (Rhinanthus minor) (A)



Wildflower Native Enriched Turf

Key product points:

- ▶ A mix of native and naturalised wild flower species.
- ▶ An enhanced wild flower species that has a little more colour and interest than the Landscape Turf, created by the addition of naturalised species to the existing list of natives.
- ▶ Garden and urban applications from 20m² to 10,000m².
- ▶ Shade and drought tolerant.
- ▶ Low Maintenance – one to two cuts a year.
- ▶ Contains a few annual plants within the mix for a ‘pop of colour’ for the first year.

Stock item.

About the Product:

Wildflower Native Enriched Turf has been developed by the company to provide a more colourful, but still low maintenance and cost effective, product that delivers

a more ‘cottage garden’ look that will naturalise over time. It is very easy to handle and delivers a guaranteed flowering environment with the assistance of the root system acting as a weed suppressant. The Native Enriched mix has been specifically designed to extend the flowering season with a variety of colour that will change throughout the season. The turf is made up of approximately 29 UK native wild flowers, the addition of approximately 23 naturalised perennial and annual flowers, subject to seed availability. The turf naturally produces a biodiverse habitat supporting many different animals such as birds, mammals, bees, butterflies and other invertebrate species. The variety of plants within this mix is a hit with the bees and people alike, and is a great option for those who intend on increasing biodiversity after a huge loss of wild flower areas in the UK.

Typical Applications:

Gardens, parks, municipal areas, private grounds and estates, road verges and roundabouts.



Photo credit to Wild by Design

Specification:

To specify product

Product Code: **WFT-Native-Enriched**

Detailed specification documents for product types, installation and maintenance requirements are available on request.



Species (Seed mixes may vary subject to availability)

Key: P = Perennial; A = Annual; BI = Biennial; SLP = Short lived perennial

Flora:			
Autumn Hawkbit (Scorzoneroideis autumnalis) (P)	Betony (Stachys officinalis) (P)	Birds-foot Trefoil (Lotus corniculatus) (P)	Black Medic (Medicago lupulina) (SLP)
Bladder Champion (Silene vulgaris) (P)	Cats Ear (Hypochaeris radicata) (P)	Common Knapweed (Centaurea nigra) (P)	Common Toadflax (Linaria vulgaris) (P)
Common Vetch (Vicia sativa ssp. Segetalis) (P)	Cowslip (Primula veris) (P)	Crimson Clover (Trifolium incarnatum) (A)	Field Scabious (Knautia arvensis) (P)
Kidney Vetch (Anthyllis vulneraria) (P)	Lady's Bedstraw (Galium verum) (P)	Meadow Cranesbill (Geranium pratense) (P)	Musk Mallow (Malva moschata) (P)
Oxeye Daisy (Leucanthemum vulgare) (P)	Perforate St John Wort (Hypericum perforatum) (P)	Ragged Robin (Lychnis flos-cuculi) (P)	Red Champion (Silene dioica) (P)
Salad Burnet (Sanguisorba minor) (P)	Self Heal (Prunella vulgaris) (P)	Strawberry Clover (Trifolium fragiferum) (P)	Tufted Vetch (Vicia cracca) (P)
Viper's Bugloss (Echium vulgare) (BI)	White Champion (Silene latifolia) (P)	Wild Marjoram (Origanum vulgare) (P)	Wild Red Clover (Trifolium pratense) (P)
Yarrow (Achillea millefolium) (P)			
Naturalised flowers:			
Alpine Forget Me Not (Myosotis alpestris) (P)	Alpine Rock Cress (Arabis alpina) (P)	Babys Breath (Gypsophila elegans) (P)	Borage (Borago officinalis) (A)
Common Columbine (Aquilegia vulgaris) (P)	Common Corncockle (Agrostemma githago) (A)	Common Pink (Dianthus plumarius) (P)	Common Poppy (Papaver rhoeas) (A)
Common Wallflower (Cheiranthus cheiri) (SLP)	Cornflower (Centaurea cyanus) (A)	Dames Violet (Hesperis matronalis) (BI)	English Marigold (Calendula officinalis) (SLP)
Fenugreek (Trigonella foenum-graecum) (A)	Garden Candytuft (Iberis umbellata) (A)	Great Large Bellflower (Campanula latifolia) (P)	Honesty (Lunaria annua) (A)
Horned Pansy (Viola cornuta) (P)	Larkspur (Delphinium consolida) (A)	Mountain Madwort (Alyssum montanum) (P)	Nodding Catchfly (Silene pendula) (A)
Perennial Flax (Linum perenne) (P)	Siberian Wallflower (Cheiranthus allionii) (SLP)	Sweet William (Dianthus barbatus) (BI)	

Min / Max Established Height

- ▶ Min: 30cm
- ▶ Max: 75cm

Wildflower Shade Tolerant Turf

Key product points:

- ▶ A wild flower turf for all soil types.
- ▶ Developed alongside Hillier Tree Nurseries to perform well around trees and shaded areas from 20m² to 10,000m².
- ▶ Shade and drought tolerant.

Stock item.

About the Product:

This Wildflower Turf® mix has been specifically designed to be installed around slightly more shaded areas, specifically around trees, but is not restricted to this application, it will also thrive in open meadow sites where the extra species will flourish.

This turf has a wider variety of flowers and grasses and is made up of over

40 different UK Native species, subject to seed availability. With a minimum of 75% wildflowers to non invasive grasses this turf type is well suited to majority of areas.

To produce this environmentally beneficial product, along with the rest of our products, every effort is made to source sustainable ingredients, for example; composted green waste and organic nutrients, as well as carefully monitoring all inputs such as electricity and water. The large amount of species is a great benefit for those wanting to increase biodiversity of an area and attracts a wide range of wildlife.

Typical Applications:

Shaded sites such as around trees and areas of low direct sunlight, also open wild flower meadows.

Min / Max Established Height

- ▶ Min: 30cm
- ▶ Max: 75cm



Specification:

To specify product

Product Code: **WFT–Shade-41**

Detailed specification documents for product types, installation and maintenance requirements are available on request.



Species: (Seed mixes may vary subject to availability)

Key: *P = Perennial; A = Annual; BI = Biennial; SLP = Short lived perennial*

Grasses:			
Crested Dogstail (Cynosurus cristatus)	Sheeps Fescue (Festuca ovina)	Yellow Oatgrass (Trisetum flavescens)	
Flora:			
Autumn Hawkbit (Scorzoneroides autumnalis) (P)	Betony (Stachys officinalis) (P)	Birds-foot Trefoil (Lotus corniculatus) (P)	Cats Ear (Hypochoeris radicata) (P)
Common Knapweed (Centaurea nigra) (P)	Common Sorrel (Rumex acetosa) (P)	Common Toadflax (Linaria vulgaris) (P)	Common Vetch (Vicia sativa) (A)
Cowslip (Primula veris) (P)	Dames Violet (Hesperis matronalis) (SLP)	Field Scabious (Knautia arvensis) (P)	Hemp Agrimony (Eupatorium Cannabinum) (P)
Kidney Vetch (Anthyllis vulneraria) (P)	Lady's Bedstraw (Galium verum) (P)	Meadow Buttercup (Ranunculus acris) (P)	Meadow Cranesbill (Geranium pratense) (P)
Meadowsweet (Filipendula ulmaria) (P)	Meadow Vetchling (Lathyrus pratensis) (P)	Musk Mallow (Malva moschata) (P)	Nettle Leaved Bellflower (Campanula trachelium) (P)
Ox Eye Daisy (Leucanthemum vulgare) (P)	Perforate St Johns Wort (Hypericum perforatum) (P)	Ragged Robin (Lychnis flos-cuculi) (P)	Red Campion (Silene dioica) (P)
Ribwort Plantain (Plantago lanceolata) (P)	Rough Hawkbit (Leontodon hispidus) (P)	Sainfoin (Onobrychis vicifolia) (P)	Salad Burnet (Sanguisorba minor) (P)
Self Heal (Prunella vulgaris) (P)	Sweet Cicely (Myrrhis odorata) (P)	Water Avens (Geum rivale) (P)	White Campion (Silene latifolia) (P)
Wild Carrot (Daucus carota) (BI)	Wild Marjoram (Origanum vulgare) (P)	Wild Red Clover (Trifolium pratense) (P)	Wood sage (Teucrium scorodonia) (P)
Yarrow (Achillea millefolium) (P)	Yellow Rattle (Rhinanthus minor) (A)		



Wildflower Roof Turf

Key product points:

- ▶ A UK native Wildflower Turf® suitable for green roof applications.
- ▶ All green roof applications from 20m² to 10,000m².
- ▶ Developed to minimise irrigation and to thrive in this particular environment.
- ▶ Shade tolerant.
- ▶ Low Maintenance – one cut per year.

Stock item.

About the Product:

Wildflower Roof Turf has been developed by the company using its unique 'soil-less' system that is more drought tolerant than the landscape product and includes species more adapted to exposed environments. It is easy to handle and delivers a guaranteed wild flower environment on a roof. The roof turf is made up of 38 UK native wild flowers and grasses, with approximately 75% wild flowers.

This substrate has been developed to be compliant with Gro regulations, whilst maintaining our high standard of being able to support plant growth, and offering a lightweight material that is free-draining.

To produce this environmentally beneficial product, every effort is made to source sustainable ingredients, for example composted green waste and organic nutrients, as well as carefully monitoring all inputs such as electricity and water. The turf naturally produces a bio-diverse habitat supporting birds, bees, butterflies and other invertebrate species.

Typical Applications:

Public buildings, private houses, garden buildings, garages, containers, wall capping

Specification:

Maintenance

- ▶ Cutting Cycle: Once every autumn
- ▶ Watering: Daily for the first 2 weeks to prevent the turf from drying out. An occasional soak may be required in long periods of dry weather and irrigation options should be considered at the point of installation.

Product Weight

- ▶ Typical Dry per m²: 20kg
- ▶ Typical Saturated per m²: 35kg

Min / Max Established Height††

- ▶ Min: 30cm
- ▶ Max: 75cm

To specify product

Product Code: **WFT-Roof-34**

Detailed specification documents for product types, installation and maintenance requirements are available on request.



Key: P = Perennial; A = Annual; BI = Biennial; SLP = Short lived perennial

Species (Seed mixes may vary subject to availability)

Grasses:			
Sheep's Fescue (Festuca ovina)			
Flora:			
Autumn Hawkbit (Scorzoneroides autumnalis) (P)	Betony (Stachys officinalis) (P)	Birds-foot Trefoil (Lotus corniculatus) (P)	Black Medick (Medicago lupulina) (SLP)
Bladder Champion (Silene vulgaris) (P)	Cats Ear (Hypochoeris radicata) (P)	Chives (Allium schoenoprasum) (P)	Clustered Bellflower (Campanula glomerata) (P)
Common Knapweed (Centaurea nigra) (P)	Common Sorrel (Rumex acetosa) (P)	Common Toadflax (Linaria vulgaris) (P)	Cowslip (Primula veris) (P)
Field Scabious (Knautia arvensis) (P)	Hoary Plantain (Plantago media) (P)	Kidney Vetch (Anthyllis vulneraria) (P)	Lady's Bedstraw (Galium verum) (P)
Meadow Buttercup (Ranunculus acris) (P)	Meadow Cranesbill (Geranium pratense) (P)	Meadowsweet (Filipendula ulmaria) (P)	Musk Mallow (Malva moschata) (P)
Ox Eye Daisy (Leucanthemum vulgare) (P)	Perforate St Johns Wort (Hypericum perforatum) (P)	Ragged Robin (Lychnis flos-cuculi) (P)	Red Campion (Silene dioica) (P)
Ribwort Plantain (Plantago lanceolata) (P)	Rough Hawkbit (Leontodon hispidus) (P)	Salad Burnet (Sanguisorba minor) (P)	Self-heal (Prunella vulgaris) (P)
Small Scabious (Scabiosa columbaria) (P)	Thrift (Armeria maritima) (P)	Tufted Vetch (Vicia cracca) (P)	Vipers Bugloss (Echium vulgare) (BI)
White Campion (Silene latifolia) (P)	Wild Marjoram (Origanum vulgare) (P)	Wild Red Clover (Trifolium pratense) (P)	Yarrow (Achillea millefolium) (P)



Photo credit to Leeds Skelton Lakes Services and ABG Ltd

Wildflower Roof Substrate

Key product points:

- ▶ A specific growing medium for Wildflower Roof Turf.
- ▶ All green roof applications from 20m² to 10,000m².
- ▶ Specifically developed to support wild flower growth on green roofs.

Stock item.

About the Product:

Wildflower Roof Turf Substrate is a dedicated Gro compliant growing medium to support wild flower growth on green roofs. It is easy to handle and apply, and can be supplied in a unique degradable or non-degradable sack depending on the roof type, or loose in bulk bags.

In line with our environmental policy, every effort is made to source sustainable ingredients, for example composted green waste and organic nutrients, as well as carefully monitoring all inputs such as electricity and water. These ingredients are carefully blended to suit the green roof environment.

Typical Applications:

Public buildings, private houses, garden buildings, garages, containers, wall capping, green walls.

Specification:

Product Weight

- ▶ Typical dry weight per sack: 15-22kg
- ▶ Typical dry weight per 1m³ bulk bag: 950kg
- ▶ Typical weight for Saturated Substrate (at 100mm depth): 90kg per m²

To specify product

Product Code: **WFT-Substrate**





Wildflower Turf Bespoke mixes

Key product points:

- ▶ Wildflower Turf® grown to order.
- ▶ Minimum 400m² order size.

Grown to order.

About the Product:

Wildflower Turf Ltd uses its unique 'soil-less' system to produce turf that is grown to order. The customer chooses their own seed mix (or seeds can be supplied by the customer) and within 12 weeks (depending on the time of year and species within the mix), the bespoke turf is ready for delivery. Growing season is between April and September. No new turf beds are laid and grown on, outside these months.

Wildflower Turf Ltd uses its extensive experience to work closely with the

customer to ensure a suitable mix is chosen to provide the required results.

Typical Applications:

Geographical region requiring a native, local provenance seed mix, aesthetic appeal – specific colours, regulatory requirements (e.g. BREEAM), ecological specification, wet, dry, shaded or site specific requirements e.g. soil type or rare species.

Specification:

Seed mix specified by the customer (subject to our approval).

Maintenance

Dependent on mix

To specify product

Product Code: **WFT-Bespoke**

Detailed specification documents for product types, installation and maintenance requirements are available on request.

Species Rich Lawn Turf

Key product points:

- ▶ A lawn turf that includes approximately 26 species.
- ▶ All ground landscaping applications from 20m² to 10,000m².
- ▶ Shade and drought tolerant.

About the Product:

This is a tried and tested turf that has been on the market for a number of years, and is a great alternative to a standard monoculture grass lawn, and boasts an 80/20 mix of grasses to wild flowers. Its improved biodiversity helps meet regulatory standards such as BREEAM and Home Quality Mark and also helps to support Biodiversity Net Gain.

As a naturally low growing lawn it can be treated in the same way as a conventional lawn with regular cutting and occasional use of fertiliser. The 6 selected grasses will provide a dense and healthy green sward throughout the seasons, without swamping the wild flowers. The 20 species of wild flower will flower and thrive on a relaxed mowing regime. This is not a colourful 'floral lawn' solution but it is 'Species Rich'

Typical Applications:

Lawns, grassed areas that are subject to regular mowing, grassed areas that are subject to regular wear.

Specification:

Maintenance

- ▶ Regular mowing, occasional fertilising

- ▶ Watering: for the first 2 to 4 weeks to prevent turf from drying out.

Product Weight

- ▶ Typical per m²: 18–20kg (dependent on moisture content and maturity when lifted)
- ▶ Typical Saturated per m²: 22kg

Min / Max Established Height††

- ▶ Min: 3cm
- ▶ Max: 10cm

To specify product

Product Code: **WFT-Species-Rich-26**

Detailed specification documents for product types, installation and maintenance requirements are available on request.



Species (Seed mixes may vary subject to availability)

Key: P = Perennial; A = Annual; BI = Biennial; SLP = Short lived perennial

Grasses:			
Chewing's Fescue (Festuca rubra subsp. Commutate)	Creeping Red Fescue (Festuca rubra trichophylla)	Dwarf Cultivar (Lolium perenne)	Sheep's Fescue (Festuca ovina)
Smaller Cat's-tail (Phleum bertolonii)	Sweet Vernal Grass (Anthoxanthum odoratum)		
Flora:			
Betony (Stachys officinalis)	Bird's-foot Trefoil (Lotus corniculatus)	Black Medic (Medicago lupulina)	Cats Ear (Hypochoeris radicata)
Common Sorrel (Rumex acetosa)	Common Knapweed (Centaurea nigra)	Cowslip (Primula veris)	Daisy (Bellis perennis)
Lady's Bedstraw (Galium Verum)	Meadow Vetchling (Lathyrus pratensis)	Meadow Buttercup (Ranunculus acris)	Pignut (Conopodium majus)
Salad Burnet (Sanguisorba minor)	Self-Heal (Prunella vulgaris)	Smooth Bedstraw (Galium mollugo)	Suckling Clover (Trifolium dubium)
White Clover (Trifolium repens)	Wild Marjoram (Origanum vulgare)	Wild Red Clover (Trifolium pratense)	Yarrow (Achillea millefolium)

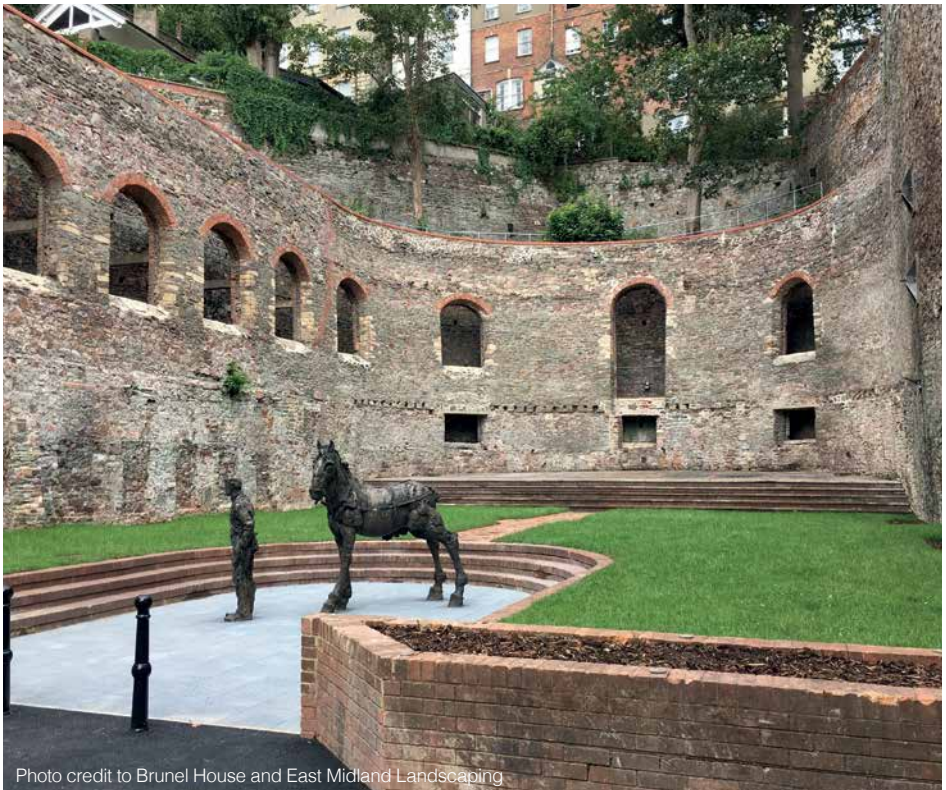


Photo credit to Brunel House and East Midland Landscaping

Wildflower SuDS Turf

Key product points:

- ▶ A UK Native wild flower turf for all soil types.
- ▶ All Sustainable Drainage Systems and Bioswale applications from 20m² to 10,000m².
- ▶ Shade and drought tolerant, suitable for periodic flooding and assists in flood water dispersal and pan breakup.

Stock item.

About the Product:

This Wildflower Turf® solution has been designed by our research and development department, using our experience with the installation of Wildflower Turf® in Sustainable Drainage Systems within the UK and liaising with Landscape and Ecology professionals. The species selected, have been chosen to assist in the breakup of pan or soil compaction for maximum water dispersal, whilst remaining established in times of drought or periodic flooding. This solution remains aesthetically and environmentally pleasing, introducing improved bio-diversity with very low maintenance required.

This turf has been developed by the company using its unique 'soil-less' system that is more drought tolerant than other more conventional methods. The turf is made up of 37 different species of wild flowers and grasses, subject to seed availability, with a minimum of 50% wild flowers.

To produce this environmentally beneficial product, every effort is made to source sustainable ingredients, for

example composted green waste and organic nutrients, as well as carefully monitoring all inputs such as electricity and water. The turf naturally produces a bio-diverse habitat supporting birds, mammals, bees, butterflies and other invertebrate species.

Typical Applications:

Bioswale and water run-off integrated with Sustainable Drainage Systems.

Specification:

Maintenance

- ▶ Cutting regime: Cut once every autumn, with the collection of cuttings.
- ▶ Watering: For the first two weeks to prevent turf drying out, after which occasional soak in long dry periods.

Product Weight

- ▶ Typical dry per m²: 18kg
- ▶ Typical saturated per m²: 18–20kg (dependent on moisture content and maturity when lifted)

Min / Max Established Height††

- ▶ Min: 30cm
- ▶ Max: 75cm

To specify product

Product Code: **WFT-SUD-37**

Detailed specification documents for product types, installation and maintenance requirements are available on request.



Species (Seed mixes may vary subject to availability)

Key: *P* = Perennial; *A* = Annual; *BI* = Biennial; *SLP* = Short lived perennial

Grasses			
Crested Dogstail (<i>Cynosurus cristatus</i>)	Sheeps Fescue (<i>Festuca ovina</i>)	Slender Creeping Red Fescue (<i>Festuca rubra</i> ssp. <i>Littoralis</i>)	Smooth Stalked Meadow Grass (<i>Poa pratensis</i>)
Sweet Vernal Grass (<i>Anthoxanthum odoratum</i>)	Yellow Oatgrass (<i>Trisetum flavescens</i>)		
Flora:			
Autumn Hawkbit (<i>Scorzoneroides autumnalis</i>)	Betony (<i>Stachys officinalis</i>)	Birds-foot Trefoil (<i>Lotus corniculatus</i>)	Bladder Champion (<i>Silene vulgaris</i>)
Cats Ear (<i>Hypochaeris radicata</i>)	Common Knapweed (<i>Centaurea nigra</i>)	Common Sorrel (<i>Rumex acetosa</i>)	Common Toadflax (<i>Linaria vulgaris</i>)
Common Vetch (<i>Vicia sativa</i>)	Cowslip (<i>Primula veris</i>)	Field Scabious (<i>Knautia arvensis</i>)	Kidney Vetch (<i>Anthyllis vulneraria</i>)
Lady's Bedstraw (<i>Galium verum</i>)	Meadow Buttercup (<i>Ranunculus acris</i>)	Meadow Cranesbill (<i>Geranium pratense</i>)	Meadowsweet (<i>Filipendula ulmaria</i>)
Musk Mallow (<i>Malva moschata</i>)	Ox Eye Daisy (<i>Leucanthemum vulgare</i>)	Perforate St Johns Wort (<i>Hypericum perforatum</i>)	Ragged Robin (<i>Lychnis flos-cuculi</i>)
Red Champion (<i>Silene dioica</i>)	Ribwort Plantain (<i>Plantago lanceolata</i>)	Rough Hawkbit (<i>Leontodon hispidus</i>)	Salad Burnet (<i>Sanguisorba minor</i>)
Self-heal (<i>Prunella vulgaris</i>)	Tufted Vetch (<i>Vicia cracca</i>)	White Champion (<i>Silene latifolia</i>)	Wild Carrot (<i>Daucus carota</i>)
Wild Marjoram (<i>Origanum vulgare</i>)	Wild Red Clover (<i>Trifolium pratense</i>)	Yarrow (<i>Achillea millefolium</i>)	Yellow Rattle (<i>Rhinanthus minor</i>)



Turf Information

Measurements

Width & Length

Turf size: 1m x 0.64m (0.64m²) if lifted from our Hampshire or Shropshire growing sites.

Or

1.62m x 0.77m (1.25m²) if lifted from our Yorkshire growing site.

Min / Max Established Height††

- ▶ Min: 30cm
- ▶ Max: 75cm

Delivery

Delivery Method	Pallet Size	*m ² Per Pallet
Dedicated Haulier	1m x 1.2m	50m ² *
Courier	1m x 1.2m	50m ² *
Collection	Optional	

Key

*- max m² delivered per pallet is subject to maturity and weight of the turf at the point of lifting. If a smaller vehicle is required for delivery due to access issues or road weight restrictions, then a reduced amount per pallet may be required.

Wildflower turf - Landscape34, Native Enriched, Shade Tolerant and SuDS

Maintenance

- ▶ Cutting regime: Once every autumn, collection of cuttings is essential. Early summer cut leaving 6-8 inches from the ground and removal of cuttings is optional if the area is particularly fertile or if you have grass or species dominance. If installing around trees, extra care and attention must be applied to the collection of leaf material and should be cleared immediately to prevent mulching and the introduction of nutrients.
- ▶ Watering: For the first 2 weeks to prevent turf from drying out, after which the occasional soak in long periods of dry weather.

Product Weight

- ▶ Typical per m²: 18–20kg (dependent on moisture content and maturity when lifted)
- ▶ Typical Saturated per m²: 22kg max

Turf Top Tips:

Time

Our turf can be laid at any time of year as long as the ground isn't completely frozen or flooded, and there will be instant green coverage, with an intentional open sward to allow plants to grow into, regardless of the time of year it is laid.

Planning ahead and preparing ground

Check the proposed area to ensure that the turf will be getting enough sunlight, as the area will need a minimum of 4 hours of direct sunlight in the summer months depending on the mix. The turf must be laid onto a minimum of 100mm of topsoil (ideally of lower nutrients) and should not be laid directly onto subsoil. It is possible to lay the turf on different slope angles with the help of our biodegradable pegs, please call and enquire for further information.

Watering

A good soak is required any day that it doesn't rain, for the first 2-3 weeks after the turf being laid to help it root in. You can check if this has soaked through during this time by carefully lifting a corner and checking the ground underneath. New turf is generally exempt from hosepipe bans (depending on local legislation) for 28 days and once established will rarely need watering.

Fertiliser

No fertiliser is needed, although in some circumstances, for example on very low fertility soil such as sand or gravel, the addition of a light dose of fertiliser in the spring may improve plant development. Please contact Wildflower Turf Ltd for accurate advice.

Cutting & Removing

Wildflower Turf requires very little maintenance and generally only needs the one essential maintenance a year at the end of the flowering season. Cut down to 25-50mm with a strimmer or a mower and ensure that the cuttings are removed. If the cuttings are left or if there is any leaf fall from nearby trees this can cause the plants to be smothered and can increase patching or disease as it rots. It is also important to water the area after cutting.

Troubleshooting

If you find that a particular species is becoming dominant or if the flowers are becoming very tall, which can sometimes happen on high fertility soil, an extra maintenance cut may be required. By introducing a mid-season high cut, 'Chelsea Chop' for late May into early June, and cutting the area down to approximately 200mm, this will open the sward and allow some of the more delicate species to flourish and this can also be used to knock grasses back for a better balance or to reduce overall height. For any more advice please contact Wildflower Turf.

Turf Step by step installation guide:

1.



- ▶ Start by clearing the area of existing plants either by using glyphosate or the use of a turf cutter. Glyphosate must be applied on a still and dry day when rain isn't forecast for 24 hours.

2.



- ▶ Dig or rotovate to a minimum depth of 100mm, depending on the level of soil compaction, to ensure that existing plants or weeds are cleared from the area.

3.



- ▶ Rake off any clods, root material and large stones to leave the area level, and to a reasonably fine tilth. Check that the ground is free draining before laying the turf.

4.



- ▶ Lay out your turf, pressing it down to ensure good root to soil contact.

5.



- ▶ Each section of turf must butt up to the next without overlapping or leaving gaps. This helps to prevent weeds growing up from beneath. Our Finisher should also be used along the edges and joins to leave a more professional finish.

6.



- ▶ Once laid, use a half moon to edge and cut around any awkward shapes. Our Finisher can also be used for these areas instead of cutting the turf, but a serrated knife will easily cut the turf to make more detailed cuts.

7.



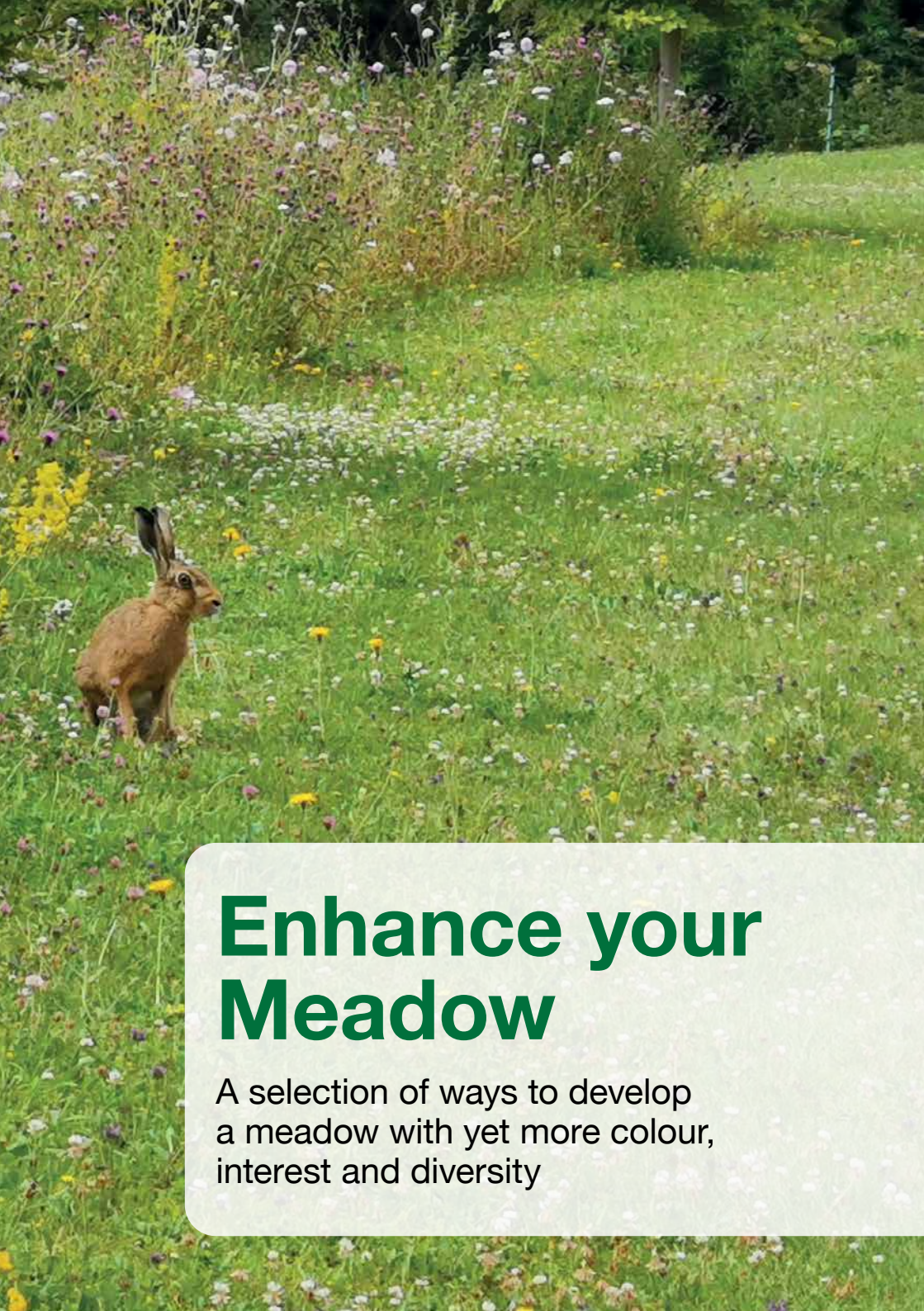
- ▶ Immediately after laying, water thoroughly until the soil underneath the turf is damp. Continue to water in this way every day that it doesn't rain for the first 2-3 weeks.

8.



- ▶ Within a few days, pull up a corner of the turf. You should see the roots starting to establish and knit into the soil.





Enhance your Meadow

A selection of ways to develop
a meadow with yet more colour,
interest and diversity

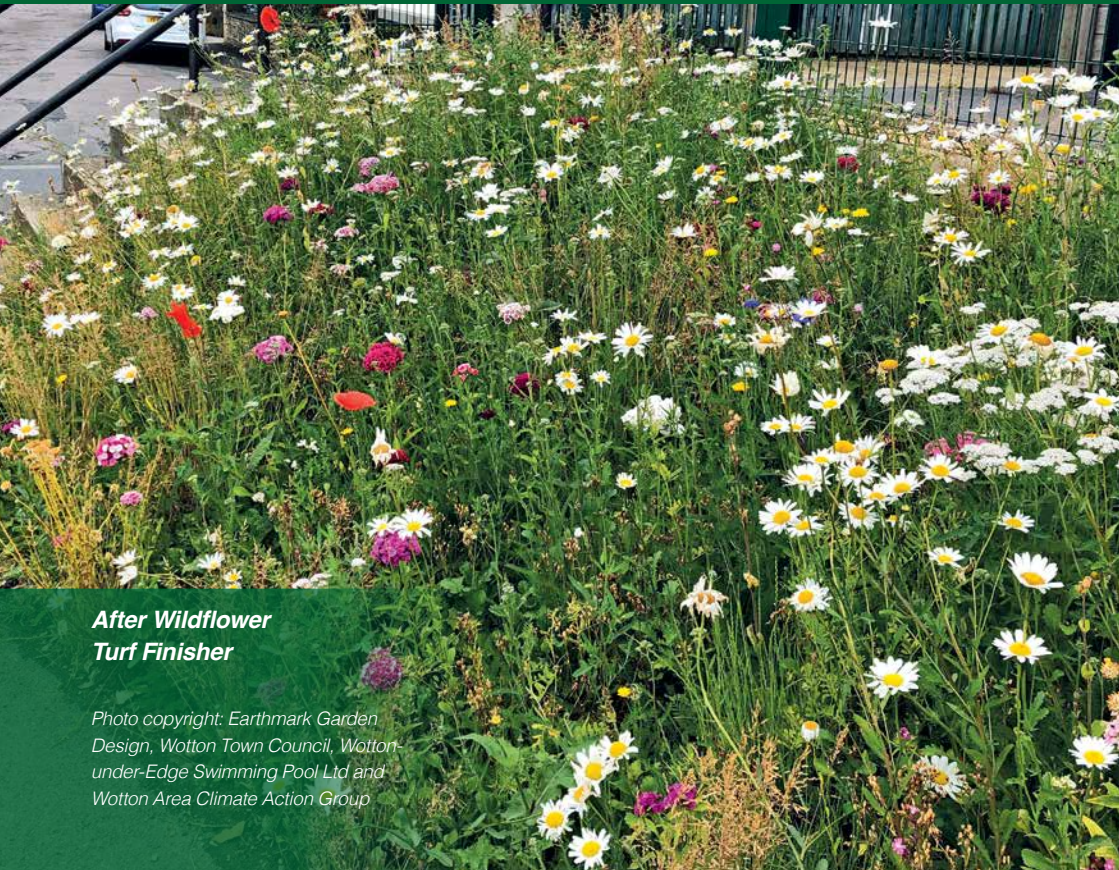
WILDFLOWER TURF FINISHER



Before



During



**After Wildflower
Turf Finisher**

Photo copyright: Earthmark Garden Design, Wotton Town Council, Wotton-under-Edge Swimming Pool Ltd and Wotton Area Climate Action Group

Assuring a quality, professional finish

Introduction

Wildflower Turf Finisher has been designed to help deliver the highest possible standard to an area of Wildflower Turf®. Developed based on feedback from established landscape contractors, this product helps deliver a top quality finish.

Specification

Product Code: **WFT-Finisher**

Supplied to order

Key Points

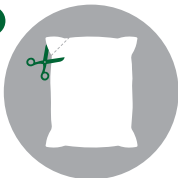
- ▶ Wildflower Turf Finisher is designed to fill joins, edges and small gaps for all Wildflower Turf® projects.
- ▶ One 20kg bag for approximately every 25m² of Wildflower Turf.
- ▶ Pre-seeded growing medium using all UK native species (no grass).

Steps to installing the product in joins, gaps and edges:

Application advice

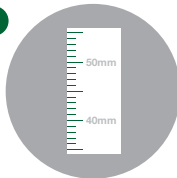
- ▶ Apply to edges and joins, during or after the installation of Wildflower Turf, before treading in. It is not designed to be a top dressing as you can smother the existing plants.
- ▶ Can be used to dress small bare patches that may have been created.
- ▶ Water area thoroughly using a fine spray or rose head to encourage quick establishment.
- ▶ The product should be used within 3 days of arrival at site.

1



Cut off the corner of the bag.

2



Apply Finisher to a depth of 40-50mm.

3



Compact the Finisher by treading the material down.

4



Keep watered alongside the Wildflower Turf® avoiding run-off.

Spring Scatter Bulb Mixes

Enhance your wild flower area by under planting with a selection of Spring Bulbs

Bulbs are the perfect accompaniment to Wildflower Turf®, enabling creativity with colour and form. Under planting your wildflower area is quick and easy as they can simply be scattered onto the bare earth before laying turf. We have worked in conjunction with JUB Holland, the Dutch flower bulb specialist, to provide you with the best advice and choice of flowers for enhancing your wild flower area.

Early flowering bulbs such as scilla, bluebells, tulips and narcissi bring interest and colour in the Spring before wild flowers emerge and are hugely beneficial to the bee and butterfly population.

With the right mix of bulbs you can expect a succession of flowering from February through to May, extending the flowering season into the less colourful months of the year.

After extensive trials on a variety of sites at Wildflower Turf®, we have developed four Spring scatter mixes that we hope will allow you to be more creative with your wildflower areas. The bulbs are extremely easy to install whilst laying your turf and require no further maintenance other than that of which you would normally carry out for your turf.

The five mixes are:

- ▶ Naturalising scatter mix
- ▶ Vibrant Spring mix
- ▶ Summer Bees & Butterflies mix
- ▶ Pastel mix

Please note these Spring scatter mixes are **only available to purchase and install September to December.**

Delivery

When ordering with Wildflower Turf®, bags or crates can be added on to the pallets of turf at little or no extra cost. When ordering bags or crates of bulbs separately, carriage will be charged at cost.



Naturalising Scatter Mix

About the Product

This mix has been specifically chosen to mirror the classic naturalised spring bulbs that are seen up and down the country. The mix of scilla, chionodoxa, fritillary and crocus, has a colour palette of 'Cool Spring', with their blend of creams, pale blues and purples that work particularly well with our Native Enriched and Landscape Turf. The bulbs will provide flowers from February to late April and are suitable for sunny and partially shaded areas.

Bulb Mix

Feb – March

Crocus mixture
(Purples and whites) 10–15 cms

March

Misczenko Squill (*Scilla mischtschenkoana*)
(White/Pale blue) 10–15cms

Glory of the Snow (*Chionodoxa*
'Mixed Colours') (Lilacs and white)
10–15cms

April

Russian Snowdrop (*Puschkinia libanotica*)
(White/pale blue) 10–20cms

Snake's Head Fritillary (*Fritillaria*
meleagris) (Purple) 15–20cms

April/May

Jonquilla daffodil (*Narcissus pueblo*)
(Creamy white) 20-30cms



English bluebells (*Hyacinthoides non-scripta*) (Purple) 25cms

Densities

For a naturalised effect we recommend planting approximately 30 bulbs per m² in swathes. Denser looks can be achieved by increasing the bulb per m² rate if you wish.

Coverage

	Number of Bulbs	Approx. Coverage
Bulb Bag	250	8m ²
Bulb Crate	2000	65m ²

Product code: **BULBS – NS**

Vibrant Spring Scatter Mix

About the Product

This mix has been specifically chosen for the fabulous colour combination to bring wild flower borders to life earlier in the year. We believe this mix will be particularly useful if you are creating an area that frames a lawn or is in an area of public use. This lovely selection of bulbs has been chosen with consideration to their height, colour and flowering time to provide impact and drama and are a perfect accompaniment to our Wildflower Landscape Turf and Native Enriched Turf. Tulips, narcissi and crocus are bold choices but never disappoint with their instant cheer.

Bulb Mix

Feb – March

Crocus (Flower Record) (Purple)
10–15cms

March

Dwarf daffodil (Narcissus Tete a tete)
(Yellow) 15cms

April

Tulip (Tulipa praestans ‘Shogun’)
(Bright orange/yellow) 25cms
Hardy dwarf daffodil (Narcissus
‘Topolino’) (Pale yellow) 15cms

April – May

Tulip (Tulipa ‘Red Hunter’)
(Scarlet red) 15cms



Densities

For a naturalised effect we recommend planting approx 30 bulbs per m² in swathes. Denser looks can be achieved by increasing the bulb per m² rate if you wish.

Coverage

	Number of Bulbs	Approx. Coverage
Bulb Bag	150	5m ²
Bulb Crate	1500	50m ²

Product code: **BULBS – VS**

Bees & Butterflies Summer Scatter Mix

About the Product

This colourful bulb mix works beautifully with both the more subtle native Wildflower Landscape Turf and the more enhanced Native Enriched Turf. The bulbs have been selected specifically for their appeal to both bees and butterflies and is a wonderful top up within a wild flower nectar bar during the summer months.

This selection of bulbs starts to flower in May through to August and all will grow to a substantial height that sees their flowers at the same level or slightly above the main flowering layer of the turf at that time. The tall straight stems provide an interesting structural perspective against the more wispy nature of the wild flowers and provides a lovely design juxtaposition for artistic landscapes. This selection of bulbs will also work in conjunction with the Spring scatter mixes and ideally you could lay both types together for a succession of structure and colour.

Bulb Mix

May

Dutch Garlic (*Allium hollandicum*
'Purple Sensation') (Purple) 80cms

Sicilian Honey Garlic
(*Nectaroscordum siculum*)
(Cream, pink and green) 80cms

June

Star of Bethlehem (*Ornithogalum*
Moskou) (White) 60–80cms

July – August

Round headed garlic
(*Allium sphaerocephalon*)
(Purple red) 60–80cms

Black garlic (*Allium nigrum*)
(White) 80cms

Densities

For a naturalised effect we recommend planting approximately 30 bulbs per m² in swathes. Denser looks can be achieved by increasing the bulb per m² rate if you wish.

Coverage

	Number of Bulbs	Approx. Coverage
Bulb Bag	150	5m ²
Bulb Crate	1500	65m ²

Product code: **BULBS – BB**



Pastel Spring Bulb Mix

About the Product

This beautiful mix of naturalising bulbs are a great fit for our Shade Tolerant turf and will thrive in shaded meadows. The colour palette is described as a 'Cool Spring', with pale blues, whites, purples and yellow. This bulb mix has been created as a low level flowering from February through until May where the wild flowers take over. Planting in clumps rather than evenly dispersed will provide a more natural spring woodland look.

Bulb Mix

Jan-Feb

Greater Snowdrop (*Galanthus elwesii*)
(White) 10-15cms

March

Misczenko Squill (*Scilla mischtschenkoana*)
(White/Pale blue) 10-20cms

Alpine squill
(*Scilla bifolia*) (Violet blue) 10-20cms

Snake's Head Fritillary (*Fritillaria meleagris*) (Purple) 10-20cms

April

Jonquilla Daffodil (*Narcissus Pueblo*)
(Creamy white) 10-20cms

Wild Tulip (*Tulipa sylvestris*)
(Yellow) 10-20cms

May

English bluebells (*Hyacinthoides non-scripta*) (Purple) 15-30 cms

Densities

For a naturalised effect we recommend planting approximately 30 bulbs per m² in swathes. Denser looks can be achieved by increasing the bulb per m² rate if you wish.

Coverage

	Number of Bulbs	Approx. Coverage
Bulb Bag	150	5m ²
Bulb Crate	1500	50m ²



Bulb Information

Bulb Top Tips:

Time

Bulbs should be planted between September and December, ideally when the ground temperature is between 4°C and 8°C. Flowering can start as early as January and finish as late as June depending on the mix.

Depth of application

If planting whilst laying the turf then the bulbs should be scattered from waist height and then covered with the turf. No additional soil or dibbing in is required. If planting into an established wildflower area, then use a hand held bulb planter to a depth of 6-8cms and plant where they have fallen after scattering from waist height.

Planning ahead and preparing ground

The area should be prepared to a fine tilth as you would with all of our turf options. Care should be taken that too much heavy weight isn't placed on the turf when the bulbs are underneath due to the small and delicate nature of the bulbs. Planting the bulbs in clumps rather than being evenly dispersed by scattering can provide a more natural woodland look.

Maintenance

No further maintenance is required for the bulbs when planted under the wildflower area, other than the general cut and remove required for the turf in the autumn months. A second cut at the end of May is sometimes advised if growth has been extreme due to weather conditions, but this should not be carried out with our Bee's and Butterflies bulb mix.

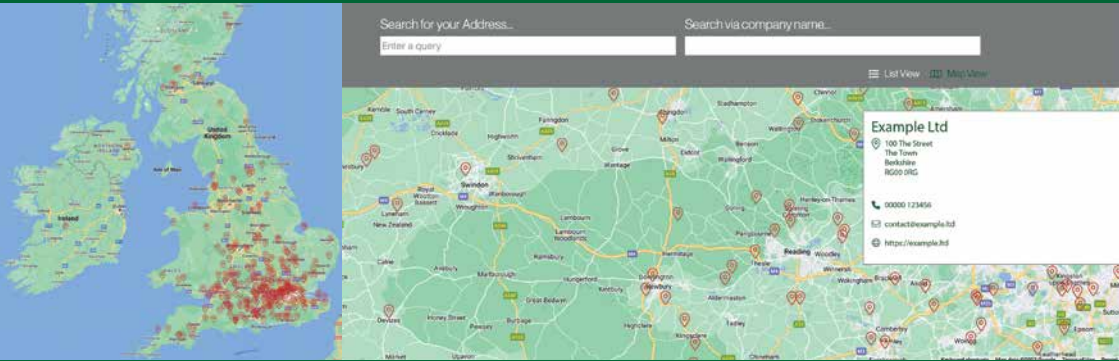


Did you know we have over 300 **Accredited Installers** across the UK?

Please use the find an installer function on our website to find one of our fully trained and accredited installers in your area to create the perfect wildflower landscape.



Please visit: <https://wildflowerturf.co.uk/find-an-installer/>



Our regularly updated list of accredited installers have attended our comprehensive training programme in order to learn how to install, establish and maintain wild flower spaces, and are actively supported by us on a daily basis.







MEADOWSCAPETM
PRO

PRODUCTS

About Meadowscape Pro™

After several years of research and product testing, Wildflower Turf Limited have developed Meadowscape Pro™, an enhanced growing medium used by professionals for effective wild flower establishment.

Enriched with Hydropor™, this specially developed formula supports good water percolation and retention, stabilising the growing medium for much better seed germination compared to more conventional direct seeding.

Meadowscape Pro™ allows land owners, developers and managers to create dynamic and biodiverse wild flower spaces in a range of settings with very little ground preparation.

Successful wild flower establishment is very dependent on quick, healthy seedling growth getting a head start over any other grass or weed species development – Meadowscape Pro™ delivers the optimal seed germination environment to make this happen.

Meadowscape Pro™ provides an accurate seed rate, blended with premium, extensively tested weed free growing medium enriched with Hydropor™ which requires significantly less investment in ground preparation, saving time in labour and machinery costs.

Suitable for:

- ▶ Large sites where there is access to irrigation but instant plant coverage is not required.
- ▶ Sites where access for ground preparation is restricted or the soil type limits conventional seed bed preparation.

- ▶ Areas with low incline (not steep slopes).
- ▶ Areas with lower historical weed burdens or lower risk of potential weed ingress.

Not suitable for:

- ▶ Areas on steep exposed slopes or excessive undulation.
- ▶ Areas with high historical weed burdens or risk of potential weed ingress.

Product size & weight

- ▶ Delivered in 1m³ bulk bags or 2m³ bulk bags, equating to 40m² laying amount or 80m² laying amounts respectively, in bags for ease of transport.
- ▶ Typical weights: 1m³ bulk bag will be approx 400kgs each and 2m³ bulk bag will be approx 800kgs each.
- ▶ Different delivery methods available.
- ▶ Please ensure you install Meadowscape Pro™ straight away after delivery. Do not be tempted to store it on site as the product can heat up which is likely to kill the wild flower seed or to start the germination process whilst still in the bag.

Meadscape Pro™ Landscape

Key Product Points

- ▶ An all UK native perennial wild flower mix suitable for a wide range of soil types.
- ▶ It is made up of over 30 species of UK native wild flowers (100% wild flowers, no grass).
- ▶ Can be used in all ground landscaping applications from 40m² to over 10,000m².
- ▶ Shade and drought tolerant – our hardiest mix.

- ▶ Low Maintenance – one to two cuts and clearance per year.

Specification

Product Code:

Meadscape Pro-Landscape-34

Detailed specification documents for product types, installation and maintenance requirements are available on request.



Species (Seed mixes may vary subject to availability)

Key: P = Perennial; A = Annual; BI = Biennial; SLP = Short lived perennial

Flora:			
Autumn Hawkbit (Scorzoneroide autumnalis) (P)	Betony (Stachys officinalis) (P)	Birds-foot Trefoil (Lotus corniculatus) (P)	Bladder Campion (Silene vulgaris) (P)
Cats Ear (Hypochoeris radicata) (P)	Common Knapweed (Centaurea nigra) (P)	Common Sorrel (Rumex acetosa) (P)	Common Vetch (Vicia sativa ssp. segetalis) (A)
Common Toadflax (Linaria vulgaris) (P)	Cowslip (Primula veris) (P)	Field Scabious (Knautia arvensis) (P)	Kidney Vetch (Anthyllis vulneraria) (P)
Lady's Bedstraw (Galium verum) (P)	Meadow Buttercup (Ranunculus acris) (P)	Meadow Cranesbill (Geranium pratense) (P)	Meadowsweet (Filipendula ulmaria) (P)
Musk Mallow (Malva moschata) (P)	Ox Eye Daisy (Leucanthemum vulgare) (P)	Perforate St Johns Wort (Hypericum perforatum) (P)	Ragged Robin (Lychnis flos-cuculi) (P)
Red Campion (Silene dioica) (P)	Ribwort Plantain (Plantago lanceolata) (P)	Rough Hawkbit (Leontodon hispidus) (P)	Salad Burnet (Sanguisorba minor) (P)
Self-heal (Prunella vulgaris) (P)	Tufted Vetch (Vicia cracca) (P)	White Campion (Silene latifolia) (P)	Wild Carrot (Daucus Carota) (BI)
Wild Marjoram (Origanum vulgare) (P)	Wild Red Clover (Trifolium pratense) (P)	Yarrow (Achillea millefolium) (P)	Yellow Rattle (Rhinanthus minor) (A)

Installation before growth.



In 1st growing season.



Meadscape Pro™ Shade Tolerant:

Key Product Points

- ▶ An all UK native perennial wild flower mix suitable for a wide range of soil types.
- ▶ Designed to perform well around trees and lightly shaded areas as well as open meadow sites.
- ▶ It is made up of over 30 different species of wild flowers (100% wild flowers, no grass).
- ▶ Can be used in all ground landscaping applications from 40m² to over 10,000m².

- ▶ Shade and drought tolerant.
- ▶ Low Maintenance – one to two cuts and clearance per year.

Specification

Product Code:

Meadscape Pro-Shade-41

Detailed specification documents for product types, installation and maintenance requirements are available on request.



Key: P = Perennial; A = Annual; BI = Biennial; SLP = Short lived perennial

Species (Seed mixes may vary subject to availability)

Flora:			
Autumn Hawkbit (Scorzoneroideis autumnalis) (P)	Betony (Stachys officinalis) (P)	Birds-foot Trefoil (Lotus corniculatus) (P)	Cats Ear (Hypochaeris radicata) (P)
Common Knapweed (Centaurea nigra) (P)	Common Sorrel (Rumex acetosa) (P)	Common Toadflax (Linaria vulgaris) (P)	Common Vetch (Vicia sativa) (A)
Cowslip (Primula veris) (P)	Dames Violet (Hesperis matronalis) (SLP)	Field Scabious (Knautia arvensis) (P)	Hemp Agrimony (Eupatorium Cannabinum) (P)
Kidney Vetch (Anthyllis vulneraria) (P)	Lady's Bedstraw (Galium verum) (P)	Meadow Buttercup (Ranunculus acris) (P)	Meadow Cranesbill (Geranium pratense) (P)
Meadowsweet (Filipendula ulmaria) (P)	Meadow Vetchling (Lathyrus pratensis) (P)	Musk Mallow (Malva moschata) (P)	Nettle Leaved Bellflower (Campanula trachelium) (P)
Ox Eye Daisy (Leucanthemum vulgare) (P)	Perforate St Johns Wort (Hypericum perforatum) (P)	Ragged Robin (Lychnis flos-cuculi) (P)	Red Campion (Silene dioica) (P)
Ribwort Plantain (Plantago lanceolata) (P)	Rough Hawkbit (Leontodon hispidus) (P)	Sainfoin (Onobrychis vicifolia) (P)	Salad Burnet (Sanguisorba minor) (SLP)
Self Heal (Prunella vulgaris) (P)	Sweet Cicely (Myrrhis odorata) (P)	Water Avens (Geum rivale) (P)	Wood sage (Teucrium scorodonia) (P)
White Campion (Silene latifolia) (SLP)	Wild Carrot (Daucus carota) (BI)	Wild Marjoram (Origanum vulgare) (P)	Wild Red Clover (Trifolium pratense) (P)
Yarrow (Achillea millefolium) (P)	Yellow Rattle (Rhinanthus minor) (A)		

Meadscape Pro™ Native Enriched:

Key Product Points

- ▶ A mix of native and naturalised perennial and annual wild flowers suitable for a wide range of soil types.
- ▶ An enhanced wild flower mix that has a little more colour and interest than the all native Landscape mix, created by the addition of naturalised species (100% wild flowers, no grass).
- ▶ Designed as a cost effective product that delivers a more 'cottage garden' look and feel that will naturalise over time.

- ▶ Can be used in all ground landscaping applications from 40m² to over 10,000m².
- ▶ Low Maintenance – one to two cuts and clearance per year.

Specification

Product Code:

Meadscape Pro-Native-Enriched

Detailed specification documents for product types, installation and maintenance requirements are available on request.



Species (Seed mixes may vary subject to availability)

Key: P = Perennial; A = Annual; BI = Biennial; SLP = Short lived perennial

Flora:			
Autumn Hawkbit (Scorzoneroides autumnalis) (P)	Betony (Stachys officinalis) (P)	Birds-foot Trefoil (Lotus corniculatus) (P)	Black Medic (Medicago lupulina) (SLP)
Bladder Campion (Silene vulgaris) (P)	Cats Ear (Hypochaeris radicata) (P)	Common Knapweed (Centaurea nigra) (P)	Common Toadflax (Linaria vulgaris) (P)
Common Vetch (Vicia sativa ssp. segetalis) (P)	Cowslip (Primula veris) (P)	Crimson Clover (Trifolium incarnatum) (A)	Field Scabious (Knautia arvensis) (P)
Kidney Vetch (Anthyllus vulneraria) (P)	Lady's Bedstraw (Galium verum) (P)	Meadow Cranesbill (Geranium pratense) (P)	Musk Mallow (Malva moschata) (P)
Oxeye Daisy (Leucanthemum vulgare) (P)	Perforate St John Wort (Hypericum perforatum) (P)	Ragged Robin (Lychnis flos-cuculi) (P)	Red Campion (Silene dioica) (P)
Salad Burnet (Sanguisorba minor) (P)	Self Heal (Prunella vulgaris) (P)	Strawberry Clover (Trifolium fragiferum) (P)	Tufted Vetch (Vicia cracca) (P)
Viper's Bugloss (Echium vulgare) (BI)	White Campion (Silene latifolia) (P)	Wild Marjoram (Origanum vulgare) (P)	Wild Red Clover (Trifolium pratense) (P)
Yarrow (Achillea millefolium) (P)			
Naturalised flowers:			
Alpine Forget Me Not (Myosotis alpestris) (P)	Alpine Rock Cress (Arabis alpina) (P)	Babys Breath (Gypsophila elegans) (P)	Borage (Borago officinalis) (A)
Common Columbine (Aquilegia vulgaris) (P)	Common Corncockle (Agrostemma githago) (A)	Common Pink (Dianthus plumarius) (P)	Common Poppy (Papaver rhoeas) (A)
Common Wallflower (Cheiranthus cheiri) (SLP)	Cornflower (Centaurea cyanus) (A)	Dames Violet (Hesperis matronalis) (BI)	English Marigold (Calendula officinalis) (SLP)
Fenugreek (Trigonella foenum-graecum) (A)	Garden Candytuft (Iberis umbellata) (A)	Great Large Bellflower (Campanula latifolia) (P)	Honesty (Lunaria annua) (A)
Horned Pansy (Viola cornuta) (P)	Larkspur (Delphinium consolida) (A)	Mountain Madwort (Alyssum montanum) (P)	Nodding Catchfly (Silene pendula) (A)
Perennial Flax (Linum perenne) (P)	Siberian Wallflower (Cheiranthus allionii) (SLP)	Sweet William (Dianthus barbatus) (BI)	



Meadscape Pro™ Annuals:

Key Product Points

- ▶ A highly colourful impactful UK annual Meadscape Pro™ suitable for creating eye-catching displays.
- ▶ Long term flowering period from May to first frosts.
- ▶ Would need re-installing annually.
- ▶ Shade and drought tolerant.
- ▶ 100% wild flowers, no grasses.

Typical Applications

- ▶ Any public or private areas for high visual impact and vibrant colour for one flowering season.
- ▶ Particularly suited to large sites where instant plant coverage is not required.

- ▶ Excellent for creating striking meadow areas for special events.

Specification

Product Code:

Meadscape Pro-Annuals

Detailed specification documents for product types, installation and maintenance requirements are available on request.

A range of annual species mixes can be supplied dependent on client requirements and seed availability. Talk to our team who will help make recommendations.



Meadscape Pro™ Species Rich Lawn:

Key Product Points

- ▶ An all UK native perennial wild flower and grass mix suitable for creating biodiverse lawns.
- ▶ This is used as an alternative to a standard monoculture grass lawn with a minimum of 80% grass content to wild flowers. Its improved biodiversity helps meet regulatory standards such as BREEAM and Home Quality Mark.
- ▶ Can be treated in the same way as a conventional lawn (regularly mown and fertilised).
- ▶ This is not a colourful 'floral lawn' solution but it is species rich.
- ▶ All ground landscaping applications from 40m² to 10,000m²+
- ▶ Shade and drought tolerant.

Specification

Product Code:

Meadscape Pro-Species-Rich-26

Detailed specification documents for product types, installation and maintenance requirements are available on request.



Key: P = Perennial; A = Annual; BI = Biennial; SLP = Short lived perennial

Species (Seed mixes may vary subject to availability)

Grasses:			
Chewing's Fescue (Festuca rubra subsp. Commutate)	Creeping Red Fescue (Festuca rubra trichophylla)	Dwarf Cultiar (Lolium perenne)	Smaller Cat's-tail (Phleum bertolonii)
Sheep's Fescue (Festuca ovina)	Sweet Vernal Grass (Anthoxanthum odoratum)		
Flora:			
Betony (Stachys officinalis)	Bird's-foot Trefoil (Lotus corniculatus)	Black Medic (Medicago lupulina)	Cats Ear (Hypochoeris radicata)
Common Sorrel (Rumex acetosa)	Common Knapweed (Centaurea nigra)	Cowslip (Primula veris)	Daisy (Bellis perennis)
Lady's Bedstraw (Galium verum)	Meadow Buttercup (Ranunculus acris)	Meadow Vetchling (Lathyrus pratensis)	Pignut (Conopodium majus)
Salad Burnet (Sanguisorba minor)	Self-Heal (Prunella vulgaris)	Smooth Bedstraw (Galium mollugo)	Suckling Clover (Trifolium dubium)
White Clover (Trifolium repens)	Wild Marjoram (Origanum vulgare)	Wild Red Clover (Trifolium pratense)	Yarrow (Achillea millefolium)

Meadscape Pro™ Bespoke mixes:

Key Product Points

- ▶ A highly flexible Meadowscape Pro™ product of your choice to match your needs and designs.
- ▶ Seed mix specified by the customer.
- ▶ Short lead time of supply depending on seed availability.
- ▶ Minimum order required 200m².

Supplied to order

Typical Applications

- ▶ Any geographical or sensitive regions requiring a native local provenance or rare species seed mix.
- ▶ For specific aesthetic appeal in certain areas or designs e.g. specific colours.

- ▶ To meet regulatory requirements such as BREEAM.
- ▶ Can meet site specific requirements such as wet, dry, shaded, specific soil types etc.
- ▶ Excellent for creating impactful meadow areas for special events e.g. Poppy installations for memorial sites.
- ▶ Particularly suited to large sites where instant plant coverage is not required.

Specification

Product Code:

Meadscape Pro-Bespoke

Detailed specification documents for product types, installation and maintenance requirements are available on request.



Meadscape Pro™ Step by step installation guide:



► An accurate coverage of glyphosate for rigorous weed control. Remove surface dead material with a mower or rake. Do not rotovate or disturb the soil.



► Alternatively if you don't want to use glyphosate, you can do a clean surface turf cut but do not rotovate or dig the soil.



► Spread the Meadowscape Pro™ to entirely cover the prepared area.



► Using a flat edge, such as a scraper or top edge of a rake, disperse the Meadowscape Pro™ to ensure an even depth.



► The required depth is 25mm, providing the optimum sowing rate of seed within the mix.



► Ensure that the material is pressed to the soil surface. For smaller areas heeling in is simple and effective.



► For larger areas, rolling with a flat or ridged roller will help prevent the material being blown about.



► Ensure the area is well watered right through to the soil beneath and kept watered until seedlings have established. Do not let material dry out.

Meadowscape Pro™ Information

Meadowscape Pro™ Top Tips:

Time

The ideal time for applications would be from the beginning of March to the beginning of October (weather dependent). However if you apply during the summer, you need to be irrigating regularly to ensure the material does not dry out.

Watering

Check your watering soaks through the entire profile of Meadowscape Pro™ ideally to the soil beneath. Do this by scratching the growing medium to check there has been thorough water uptake throughout. Do not let the material dry out or the seeds will not germinate. Once wet through stop watering, excessive watering will lead to run off and erosion.

Cutting & Removing

Meadowscape Pro™ requires very little maintenance, however in the autumn it is important to cut the plants and remove the cuttings. This can be done by strimming and raking or using a mower and collecting the cuttings. Cut down to 1 to 2 inches (2.5cm to 5cm) in height. After your cut and remove, if there is any leaf fall from nearby trees and bushes, please clear this away too to stop the surface plants from being smothered and adding fertility and disease as it rots.

Depth of application

The required depth of application is very important. Under 25mm will increase the likelihood of weed ingress due to sparser coverage of wild flowers. Applications thicker than 25mm will provide too much nutrient to the site and at a seed rate that is too high causing too much competition and a reduction in species diversity in the long run.

Fertiliser

No fertiliser is needed, although in some circumstances, for example on very low fertility soil such as sand or gravel, the addition of a light dose of fertiliser in the spring may improve plant development. Please contact Wildflower Turf Ltd for accurate advice.

Overwintering

The Meadowscape Pro™ area will remain short and green throughout winter. An open sward over the winter ensures healthy, disease free plants ready to take advantage of the light and temperature changes in the spring to develop and repeat their perennial life cycle.



Tel: 01256 771222

www.wildflowerturf.co.uk

 @wildflowerturf

 wildflower-turf-ltd

 wildflowerturf.co.uk


WILDFLOWER TURF[®]
PRODUCT | CONSULTANCY | TRAINING | RESEARCH

Wildflower Turf is the registered trademark of Wildflower Turf Ltd no. UK00003049866